

DriveWizard® Industrial for Windows Help

Welcome



[Introduction](#)

[Getting Started](#)

[Parameter Operations](#)

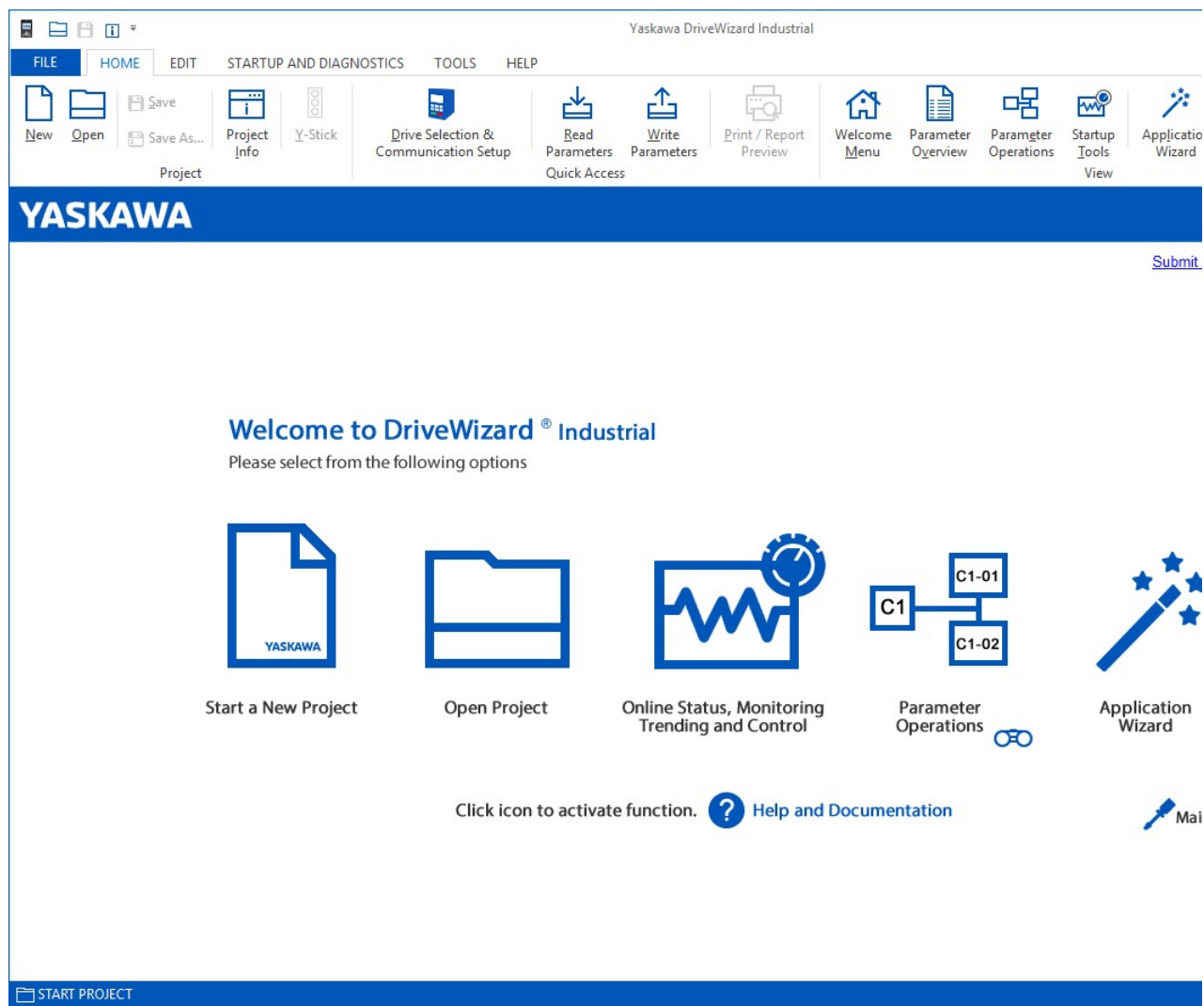
[Startup and Diagnostics](#)

[Help and Information](#)

[Installing the 1000 Series USB Driver](#)

[Installing the GEM Series USB Driver](#)

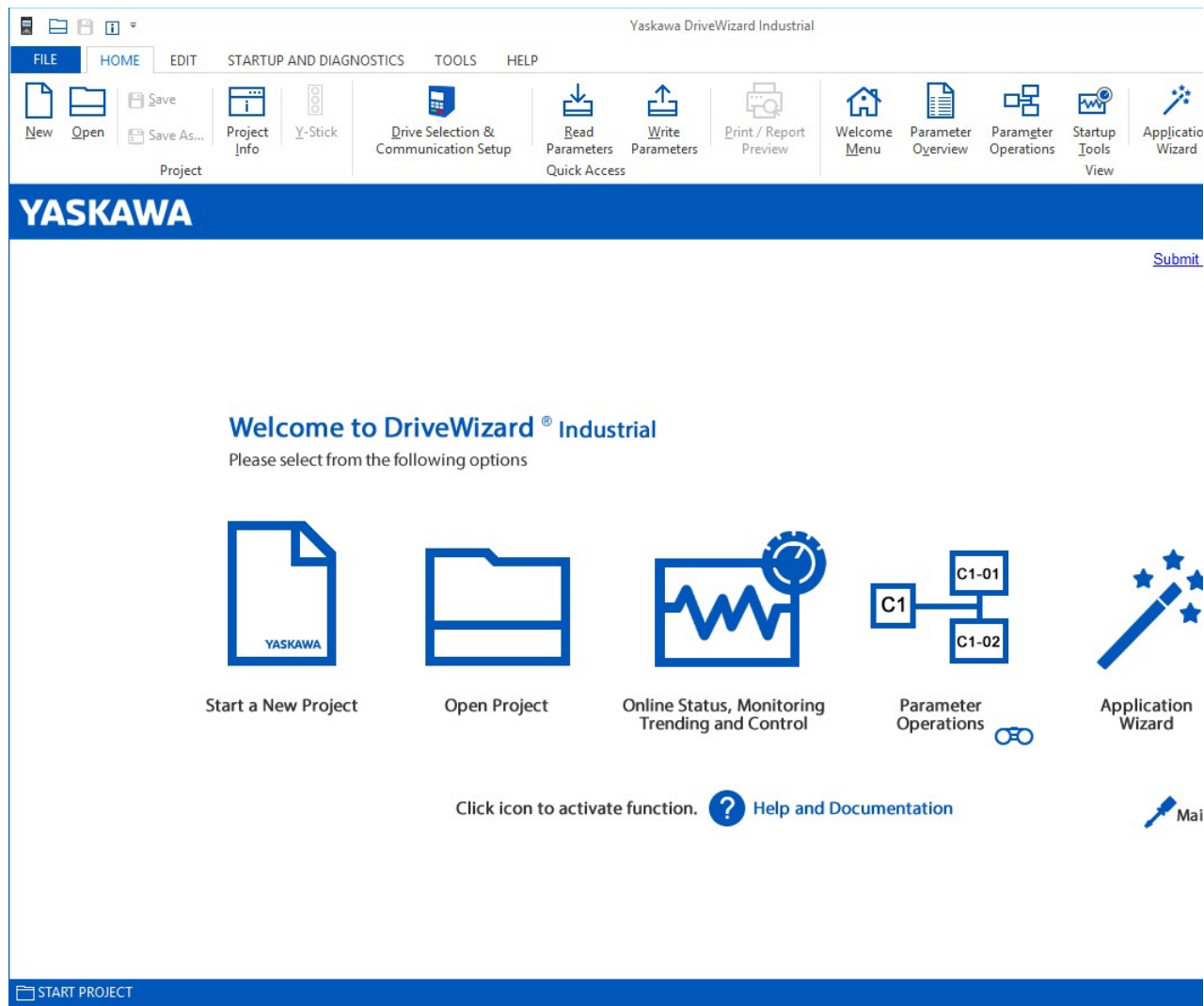
[Maintenance](#)



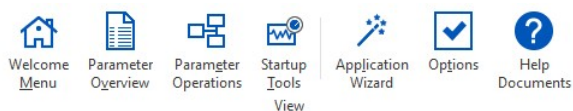
DriveWizard® Industrial for Windows Help

Introduction

Welcome and thank you for using **DriveWizard**. An innovative software tool to commission Yaskawa Series AC Drives.



From the main program window the user can navigate through the program by using the short-cuts located in the View panel.



Welcome Menu: Main menu

Parameter Overview: Parameter overview, print and export window

Parameter Operation: Read, Write, Compare, Modified Parameters

Startup Tools: Monitor Panel, Status & Fault History Panel, Trend-Recorder, Motor Tuning

Options: Program settings

Help Documents: Program Help File and Drive Documentation
DriveWizard® Industrial for Windows Help

System Requirements

- Computer with Intel® Core i3 or equivalent processor.
- Microsoft® Windows® 7 or higher with latest service pack.
- 2GB or more recommended.
- Minimum screen resolution of 1024 x 768 (1280 x 800 recommended).
- 400 MB of available disk space.
- Mouse or other pointing device.
- Inkjet or laser printer for printing of reports.
- E-mail with Messaging Application Programming Interface (MAPI) to e-mail reports.
- Internet Connection to download software updates.
- Ethernet, serial port or USB port.