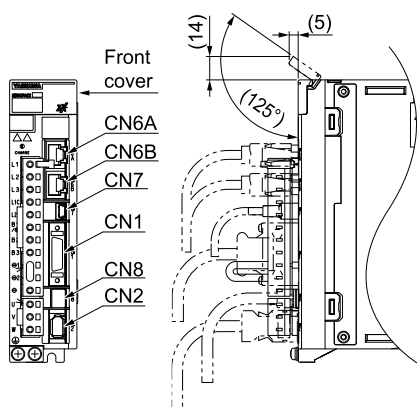


External Dimensions

Front Cover Dimensions and Connector Specifications

The connector shapes and pin assignments depend on the interfaces of the SERVOPACK. Refer to the following figures and table.

■ Front Cover Dimensions



■ Connector Specifications

Connector No.	Model	Number of Pins	Manufacturer
CN1	10226-59A3MB	26	3M Japan Limited
CN2	53984-0681	6	Molex Japan Co., Ltd.
CN6A/B	3-1734579-4	8	Tyco Electronics Japan G.K.
CN7	2342993-1	5	Tyco Electronics Japan G.K.
CN8	2294415-1	8	Tyco Electronics Japan G.K.

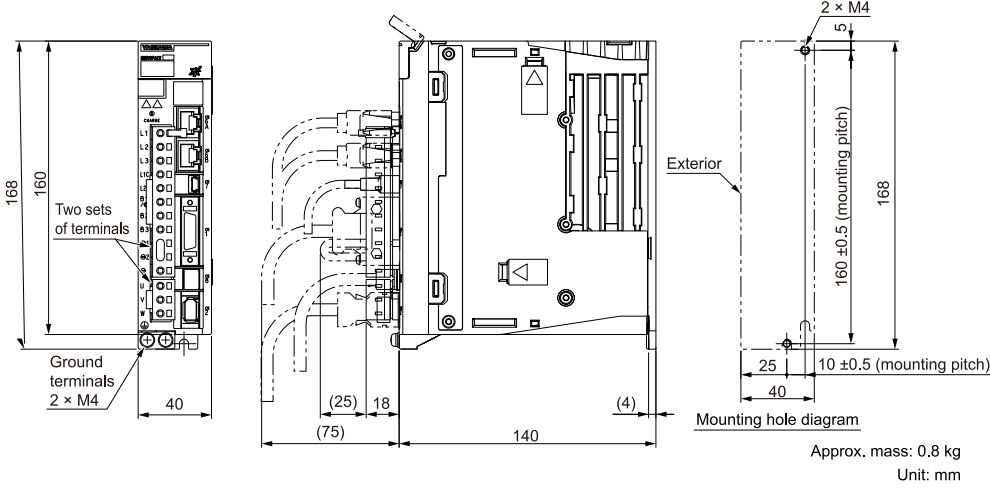
Note:

The above connectors or their equivalents are used for the SERVOPACKs.

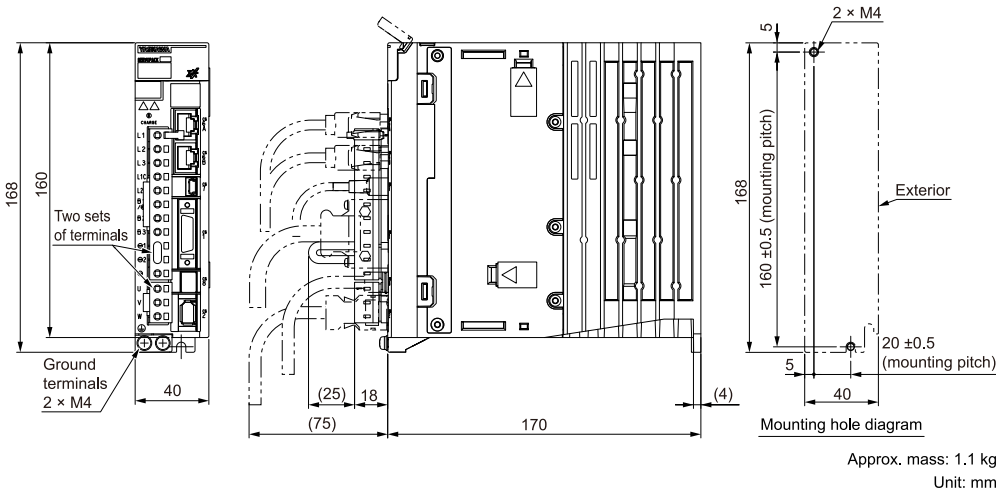
SERVOPACK External Dimensions

■ Base-mounted SERVOPACKs

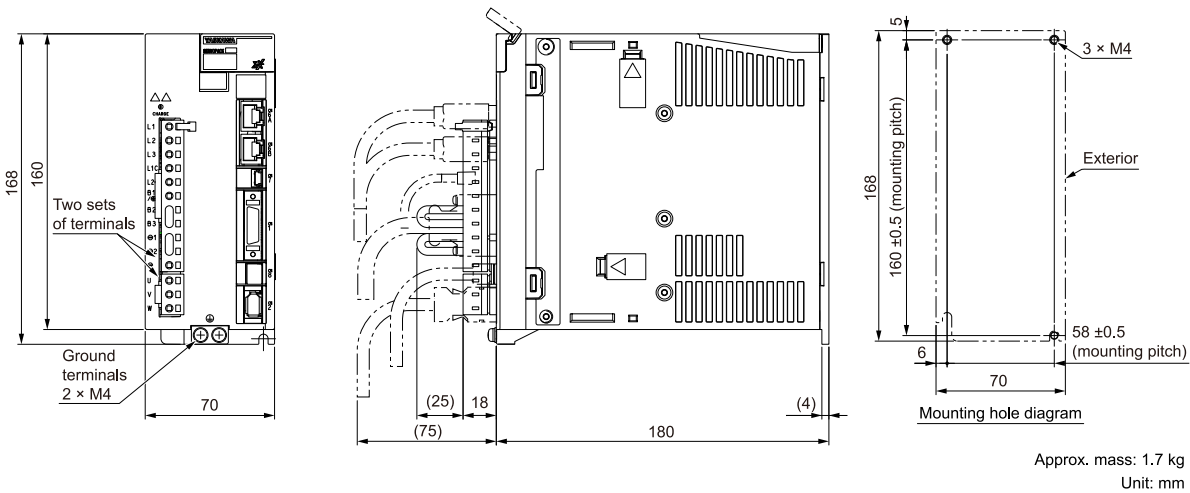
◆ SGDXS-R70A, -R90A, -1R6A



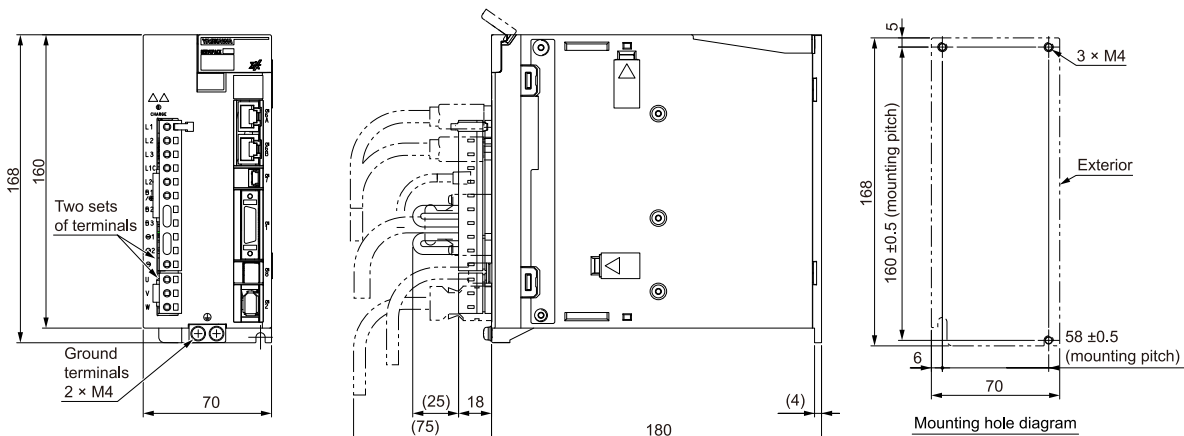
◆ SGDXS-2R8A



◆ SGDXS-3R8A

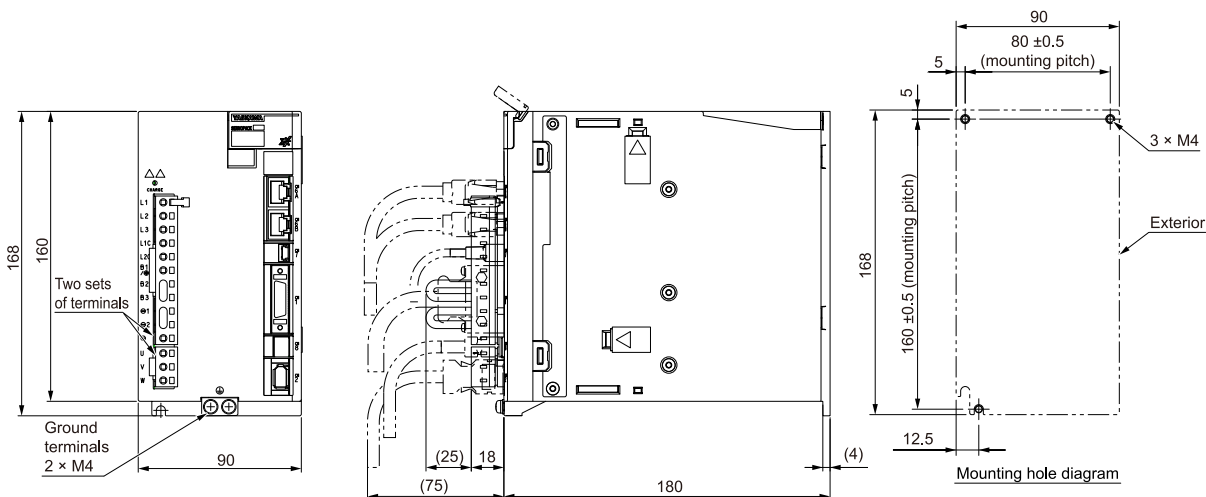


◆ SGDXS-5R5A, -7R6A



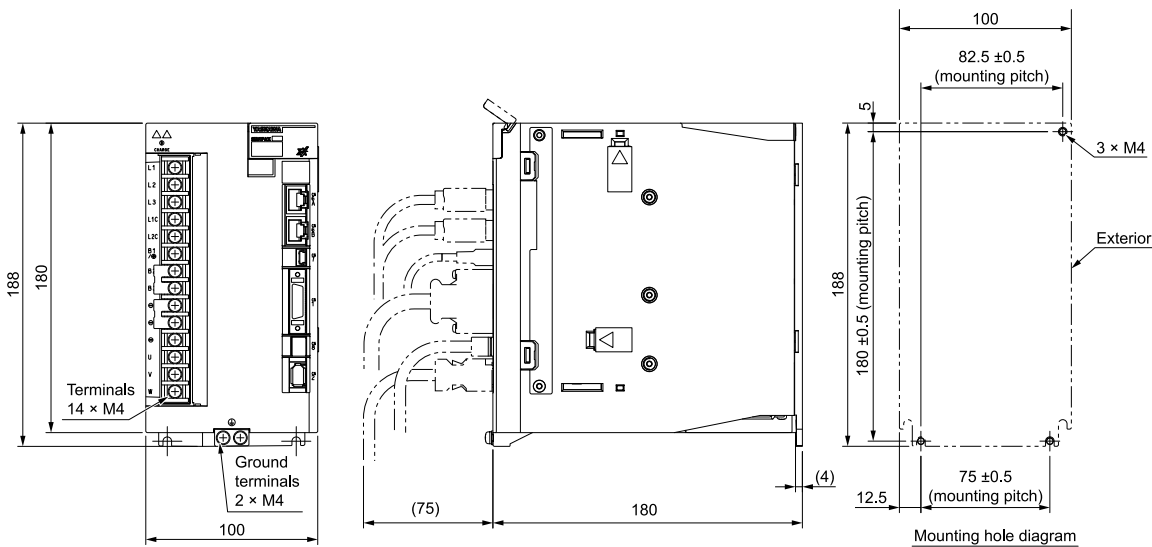
Approx. mass: 1.6 kg
Unit: mm

◆ SGDXS-120A



Approx. mass: 2.1 kg
Unit: mm

◆ SGDXS-180A, -200A

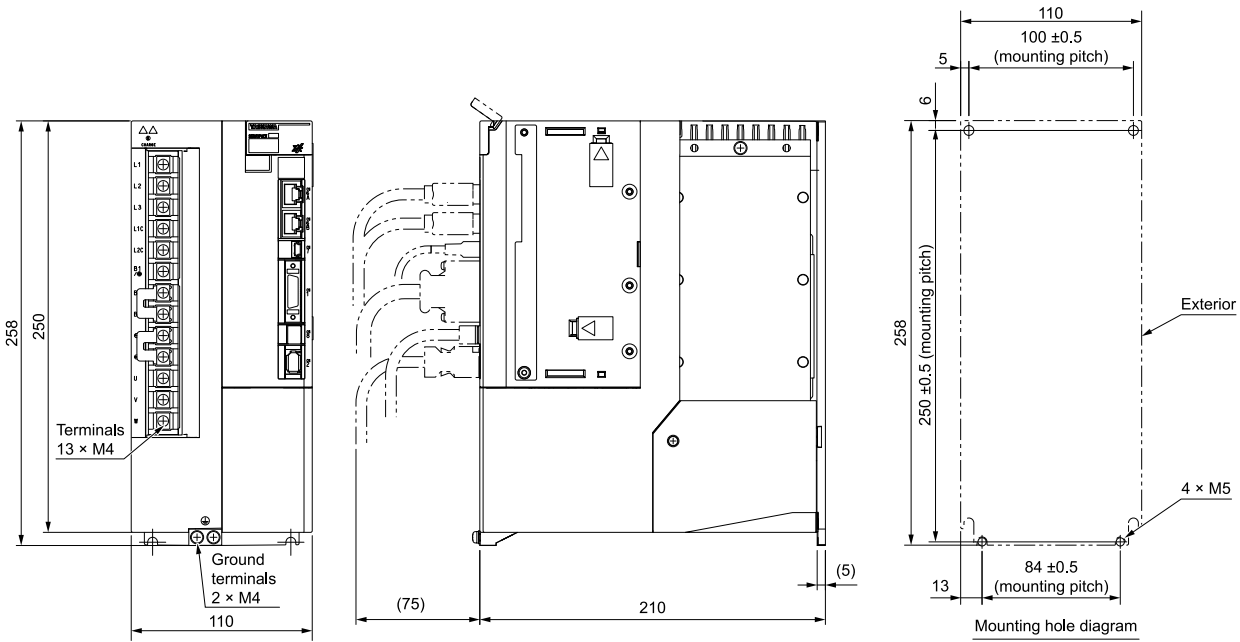


Approx. mass: 2.8 kg
Unit: mm

Note:

These drawings show the SERVOPACK with the terminal cover removed.

◆ **SGDXS-330A**

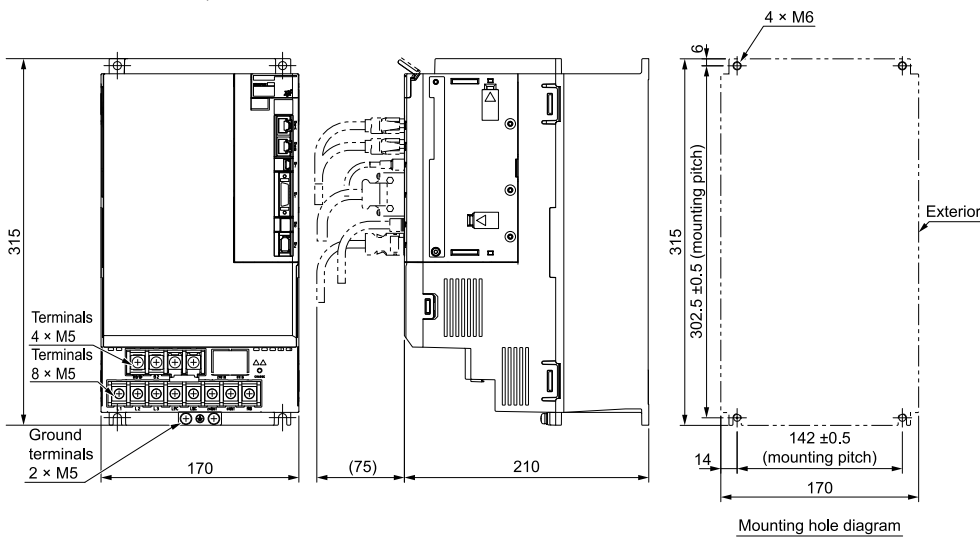


Approx. mass: 4.4 kg
Unit: mm

Note:

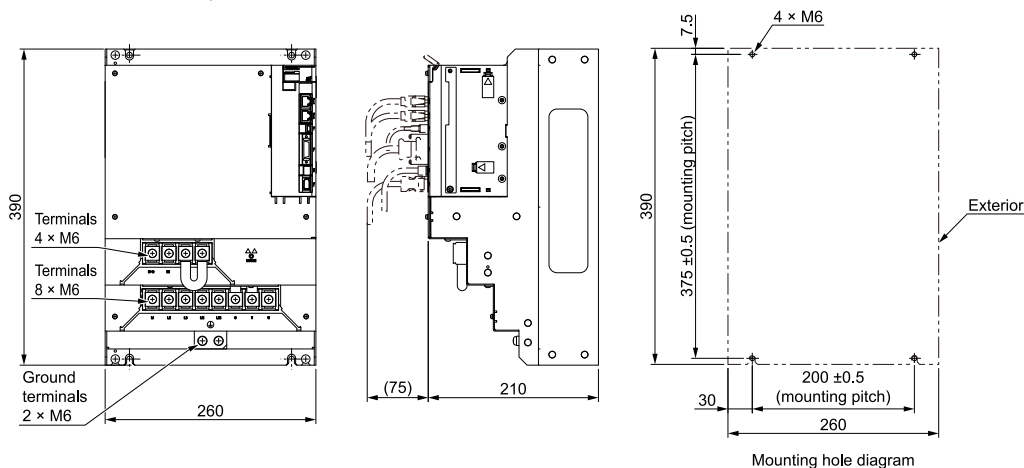
These drawings show the SERVOPACK with the terminal cover removed.

◆ **SGDXS-470A, -550A**



Approx. mass: 9.0 kg
Unit: mm

◆ **SGDXS-590A, -780A**

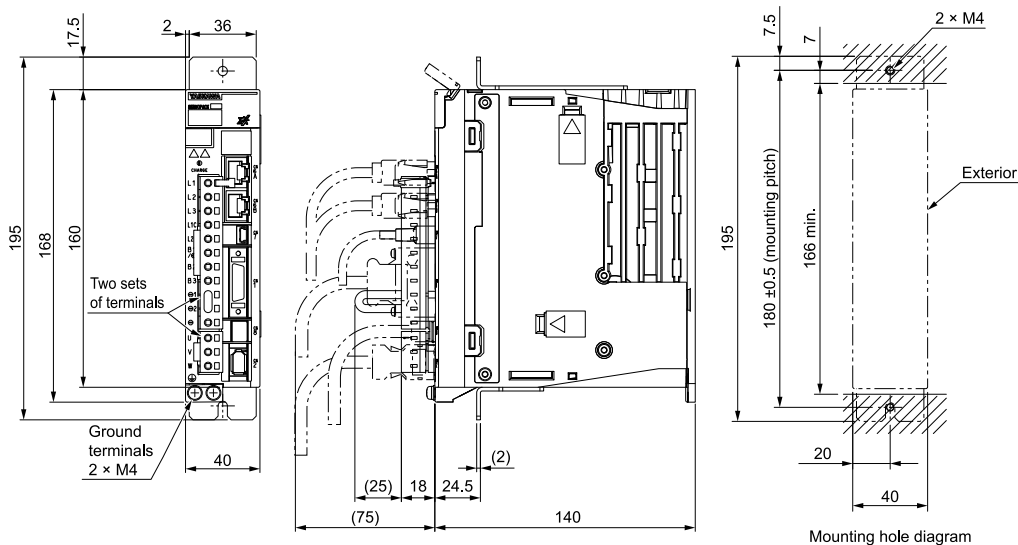


Approx. mass: 16 kg
Unit: mm

■ **Rack-mounted SERVOPACKs**

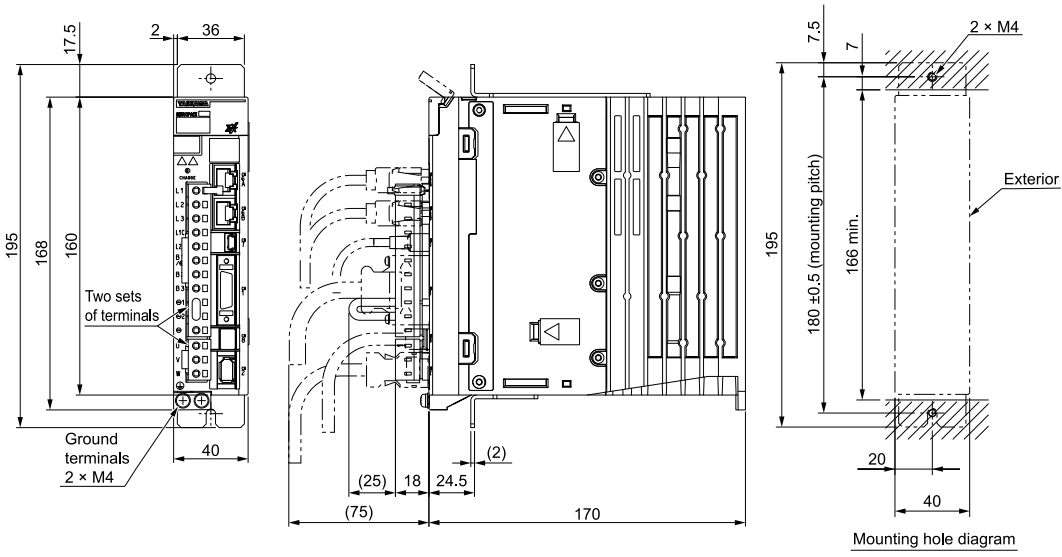
Hardware Option Code: 0001

◆ **SGDXS-R70A, -R90A, -1R6A**



Approx. mass: 0.9 kg
Unit: mm

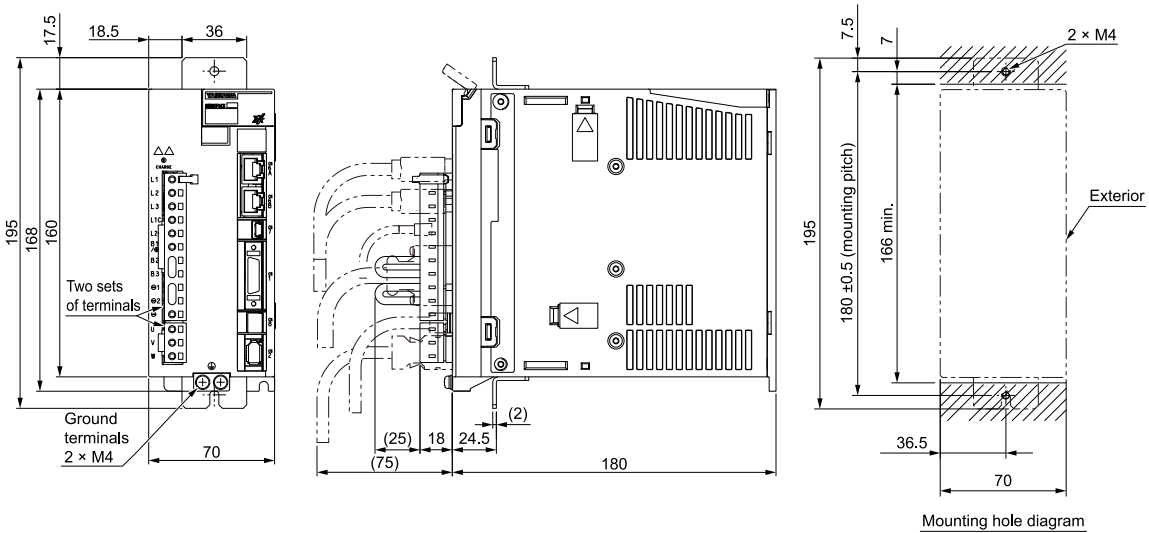
◆ **SGDXS-2R8A**



Mounting hole diagram

Approx. mass: 1.1 kg
Unit: mm

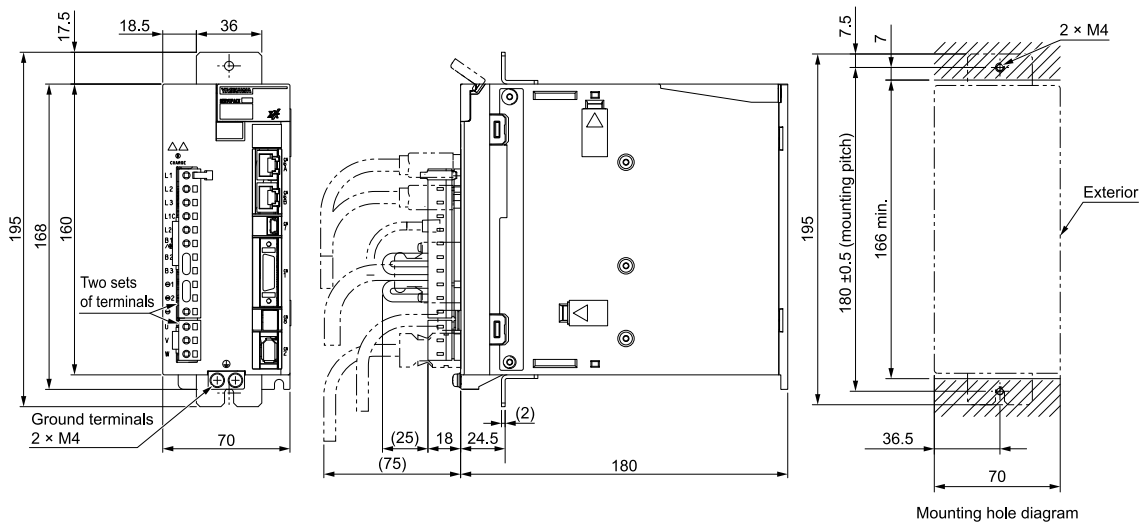
◆ **SGDXS-3R8A**



Mounting hole diagram

Approx. mass: 1.7 kg
Unit: mm

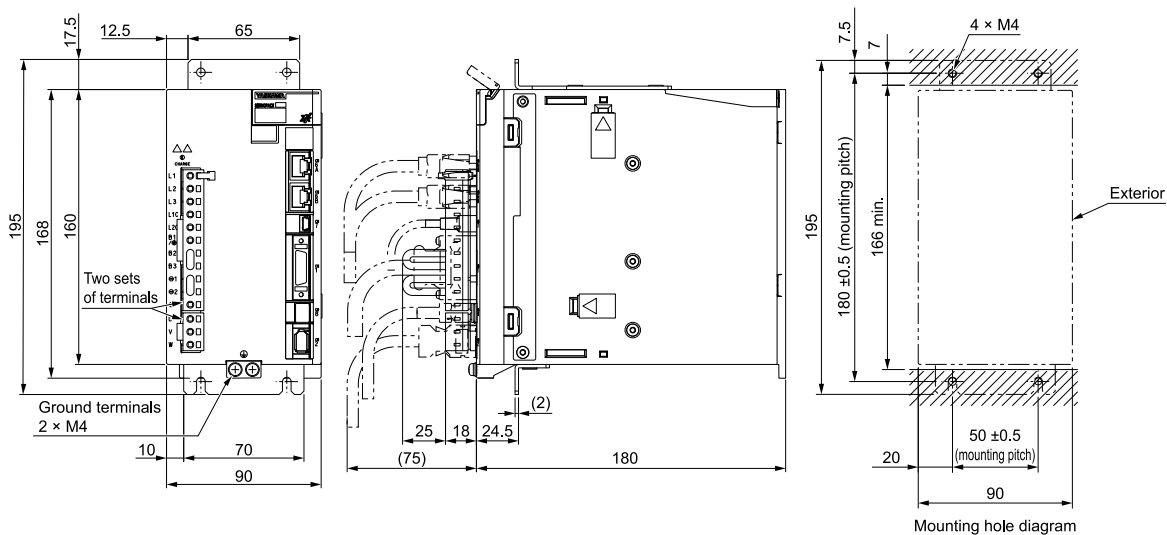
◆ **SGDXS-5R5A, -7R6A**



Mounting hole diagram

Approx. mass: 1.7 kg
Unit: mm

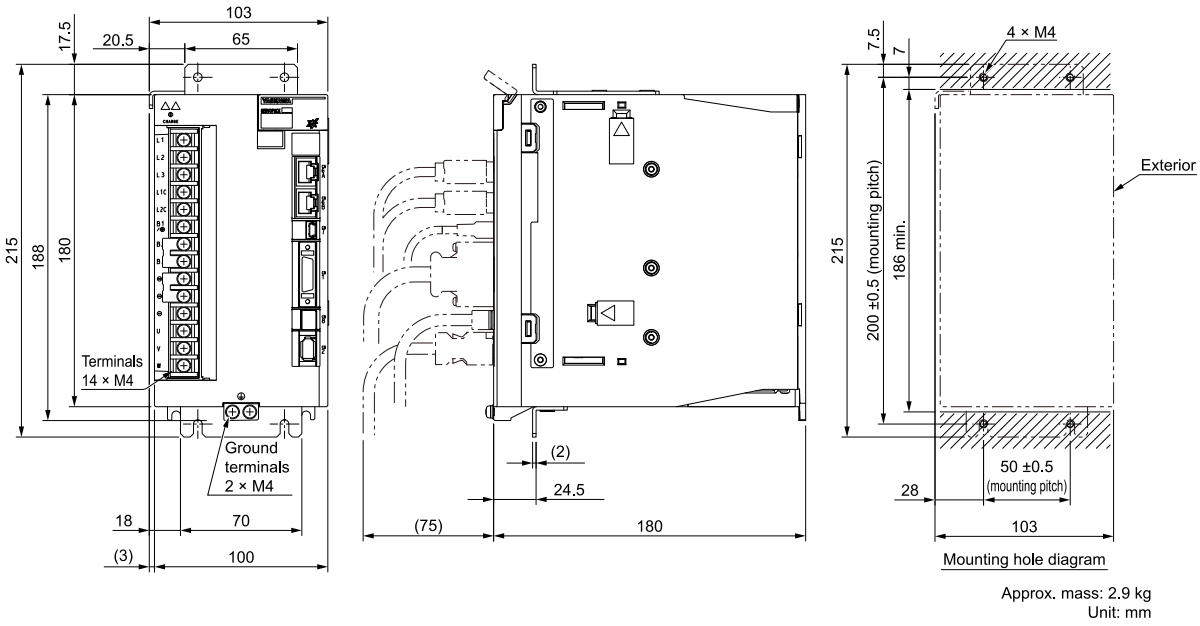
◆ **SGDXS-120A**



Mounting hole diagram

Approx. mass: 2.2 kg
Unit: mm

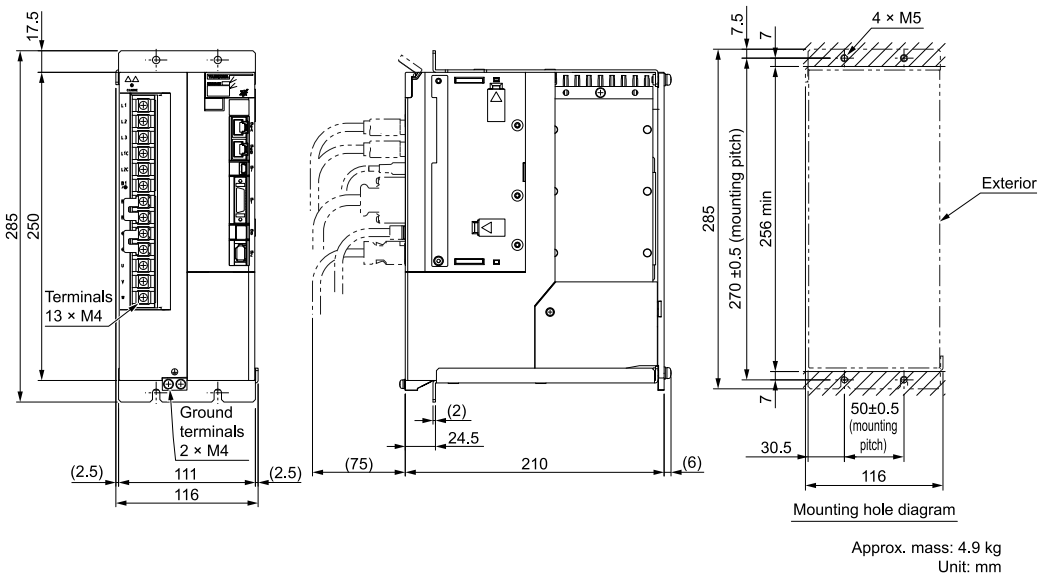
◆ **SGDXS-180A, -200A**



Note:

These drawings show the SERVOPACK with the terminal cover removed.

◆ **SGDXS-330A**



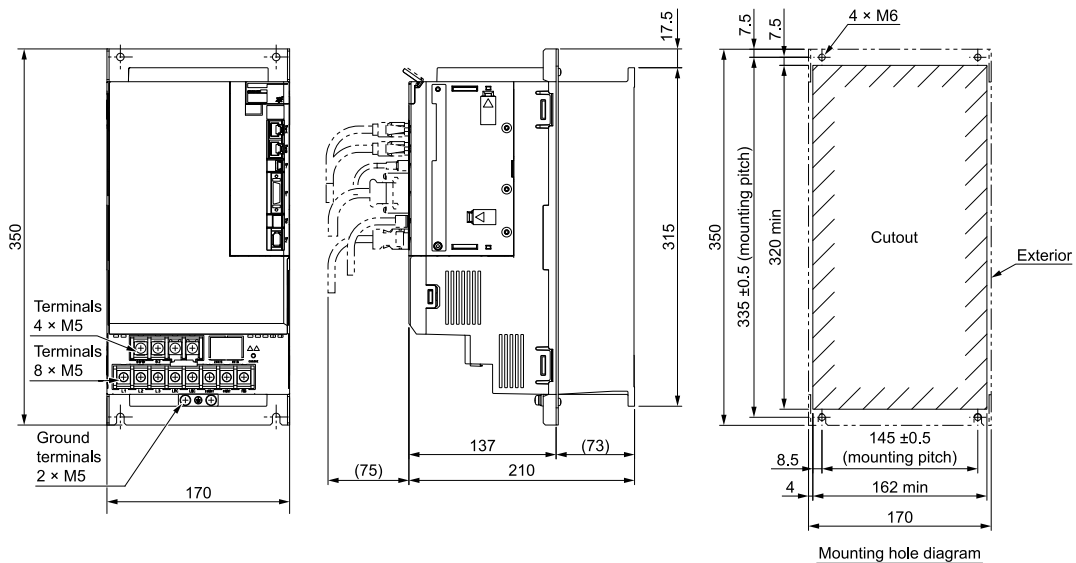
Note:

These drawings show the SERVOPACK with the terminal cover removed.

■ **Duct-ventilated SERVOPACKs**

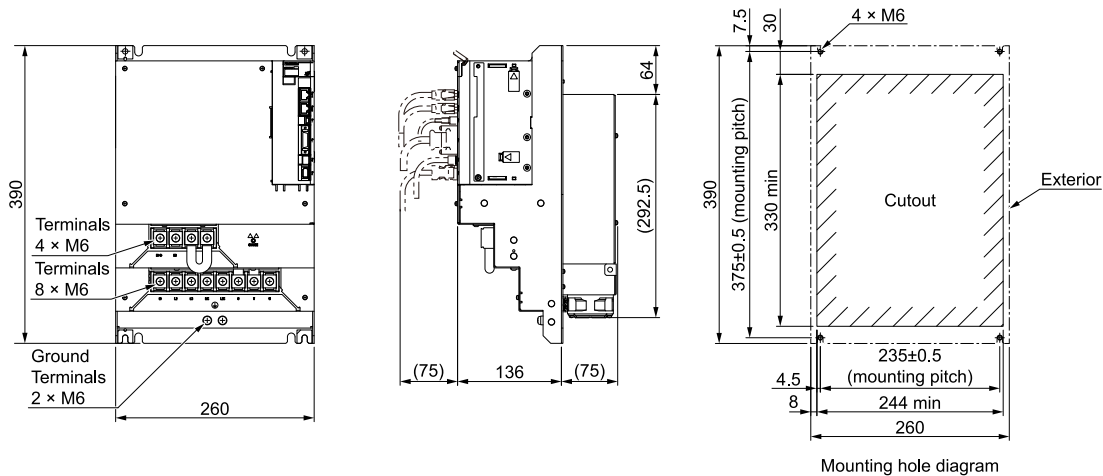
Hardware Option Code: 0001

◆ **SGDXS-470A, -550A**



Approx. mass: 9.0 kg
Unit: mm

◆ **SGDXS-590A, -780A**



Approx. mass: 15 kg
Unit: mm