



Crew runtime
User manual

SOFTWARE

Connect
Ideas.
Shape
solutions.



Table of contents

Introduction.....	4
What is Crew runtime	4
How to install Crew runtime	4
License management	6
Crew development license.....	6
Crew runtime license	7
Crew runtime license activation	8
Online activation	8
Offline activation.....	9
Demo Mode	11
Application download	12
Application start up	14
Application backup and restore.....	16
Backup.....	17
Restore.....	18





Introduction

What is Crew runtime

Crew runtime is the application to be installed in a windows based (W7 or W10) target device in order to run an application developed with Crew .

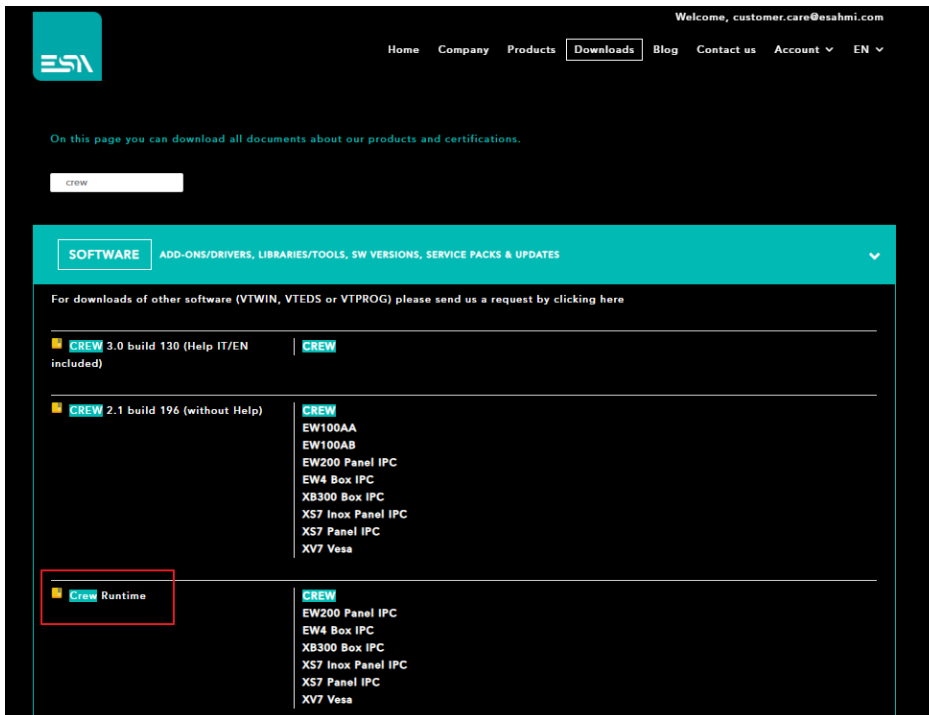
Crew is the Scada application development tools from ESA spa.

Once the Crew runtime is installed the user can download the application from the Crew development suite to the target having Crew runtime onboard via a LAN connection. It is also possible to define that Crew runtime has to start automatically at the product startup.

How to install Crew runtime

Crew runtime can be downloaded from the download page of the official ESA website www.esa-automation.com.

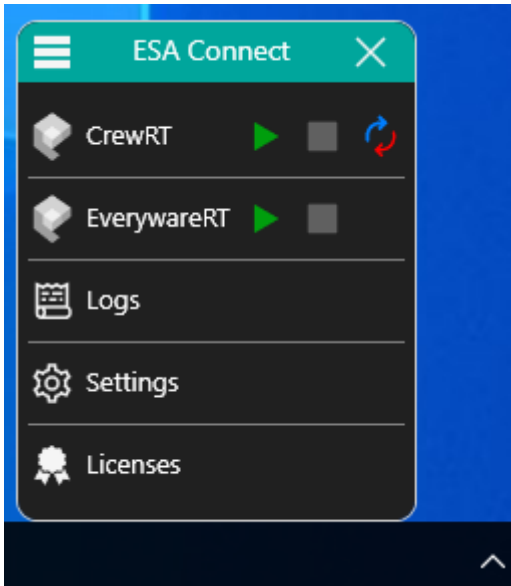
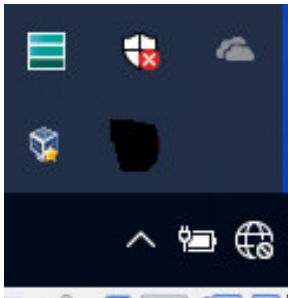
The user first has to Login to the website, enter the download area and look for Crew runtime via the dedicated textbox.





Once the download is complete the user has to run the exe file named Esaware_License_Manager.zip.

The application is installed as a service in the taskbar and the programming page will be displayed by clicking on the small ESA Icon.



This application does include both the Crew runtime and the Everyware runtime. They are totally independent with separate license and settings.



License management

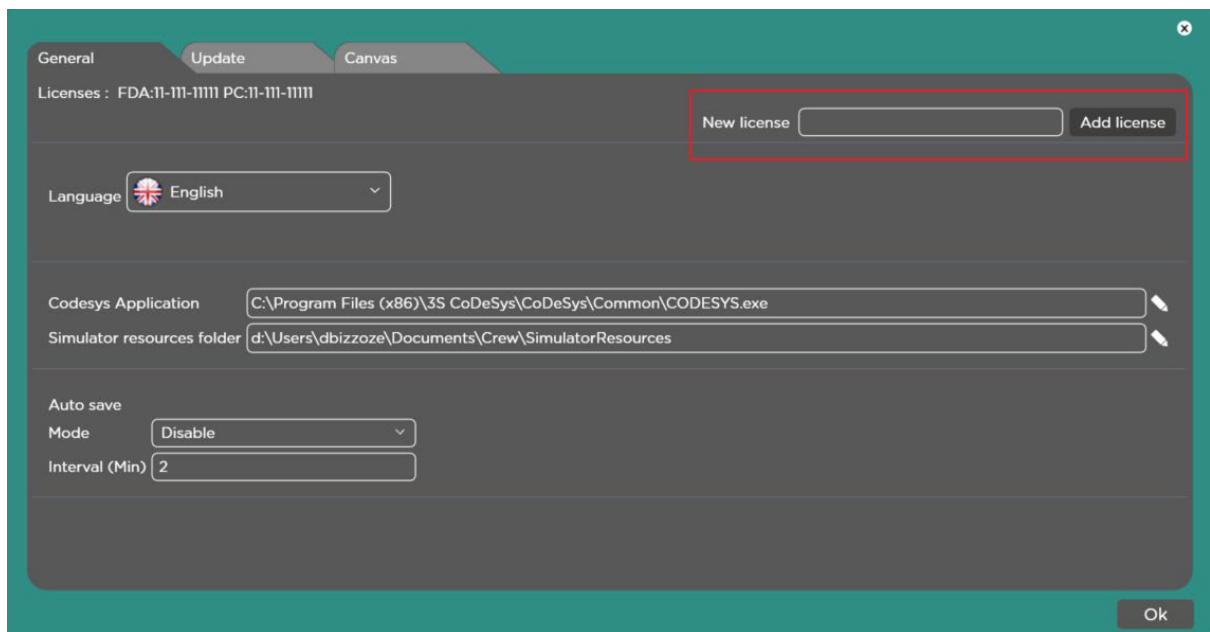
In order to develop and run the application the user has to insert the following license:

- Crew development license
- Crew runtime license

Crew development license

It is a COMPANY license (valid for all the Crew users of the company) and is mandatory in order to develop a PC based application with Crew.

The user has to select START – OPTIONS and insert the Crew editor license in the box below. The license is a 16 digits unique code.



The ordering code of this license is **CREWPCEDITOR**.



Crew runtime license

It is a single device device (each target device must have a different runtime license) and must be selected based on:

- the target device
 - OEM license: the target device is from ESA and Windows is installed by ESA
 - OPEN license: the target device is not from ESA
- The total amount of device tags defined in the Crew project.

The table below lists the different ordering codes based on the target device type and the number of tags.

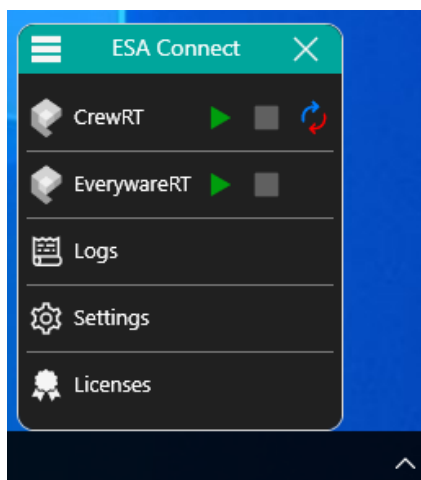
License code	Hardware	Tag number
CRRT128OEM	ESA Hardware and ESA OS	128
CRRT256OEM	ESA Hardware and ESA OS	256
CRRT512OEM	ESA Hardware and ESA OS	512
CRRT1024OEM	ESA Hardware and ESA OS	1024
CRRT2048OEM	ESA Hardware and ESA OS	2048
CRRT4096OEM	ESA Hardware and ESA OS	4096
CRRT8192OEM	ESA Hardware and ESA OS	8192
CRRTUNLOEM	ESA Hardware and ESA OS	Unlimited
CRRT128OPN	Not ESA hardware	128
CRRT256OPN	Not ESA hardware	256
CRRT512OPN	Not ESA hardware	512
CRRT1024OPN	Not ESA hardware	1024
CRRT2048OPN	Not ESA hardware	2048
CRRT4096OPN	Not ESA hardware	4096
CRRT8192OPN	Not ESA hardware	8192
CRRTUNLOPN	Not ESA hardware	Unlimited



Crew runtime license activation

In order to install and activate the Crew runtime license the user has to follow the step by step procedure described below:

Open ESA Connect and select Licenses



Online activation

The license can be installed via the Online procedure (if the target PC is connected to internet) simply filling the form below.

ESA Connect - Add License

Online ▾

License (*)

First name (*) Last name (*)

Company (*)

Address (*)

City (*) Country (*)

Email Phone

Once complete the license will be automatically registered in the ESA database and activated in this target.

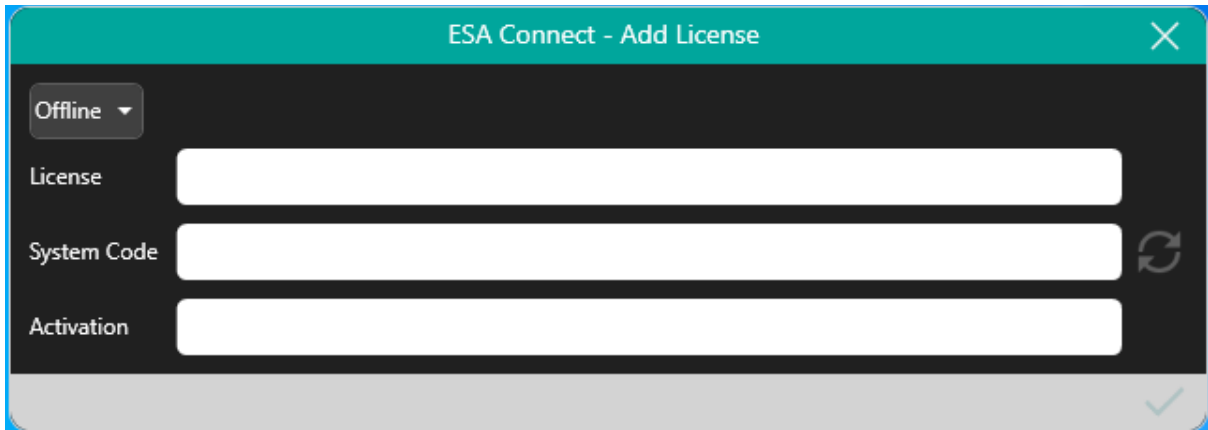


The application can run without any limitation.

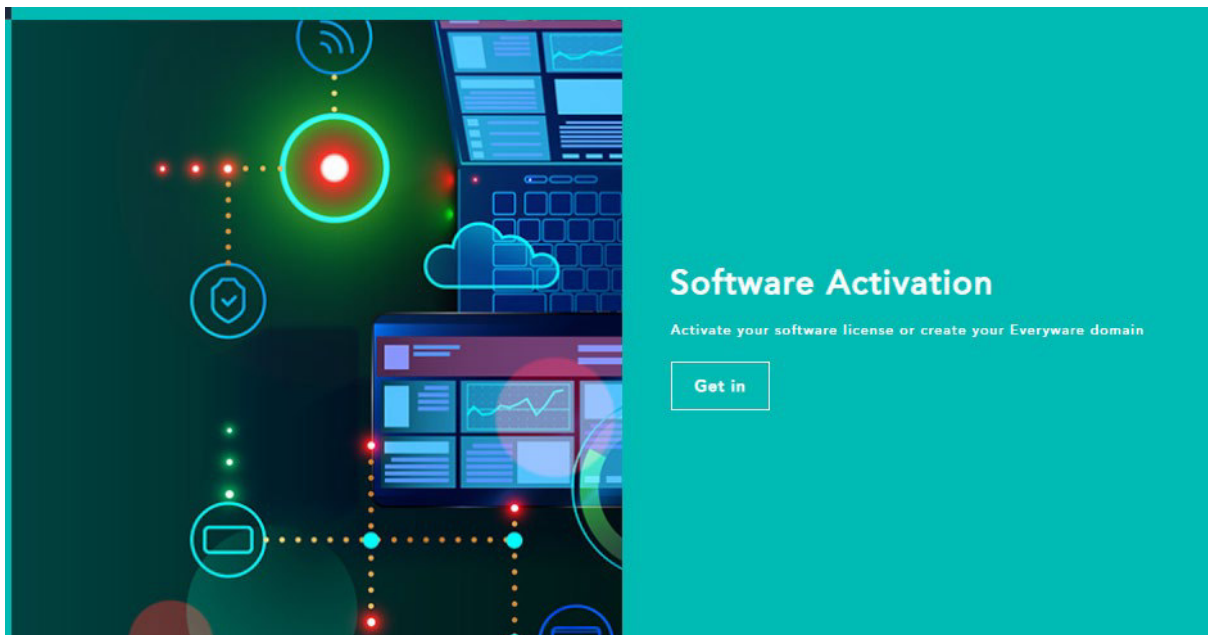
Offline activation

If the target PC is not connected to internet the user has to follow the offline activation procedure.

The first step is insert the license code and press the refresh icon in order to get the System Code.



The second step is open the ESA website homepage and select the software activation button.





A new form will be opened where the user has to insert the company informations and the system code.

Soluzioni HMI e di Automazione x ESA Activation Service x +
everyware.esaware.com:8082/licenses/default.html?license=activation

SOFTWARE ACTIVATION DOMAIN ACTIVATION

SOFTWARE ACTIVATION

Customer

Name (mandatory)

Company (mandatory)

Email (optional)

Phone (optional)

Address (optional)

System code

(system code)

Generate activation code

Then he has to press the button generate activation code and then copy and paste the code into the form displayed on the target.

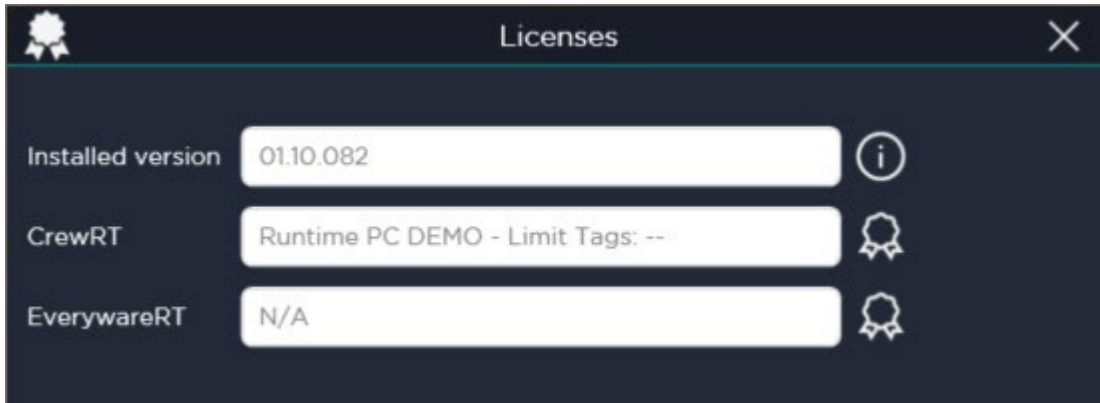
Once inserted the activation code and press the confirmation button the license activation procedure is completed.

This license is saved in the ESA database together with the hardware identifier and cannot be reused in another target PC.



Demo Mode

If the license is not available is it possible to test the application with the Crew runtime in DEMO mode.



The application can be downloaded and will run (with all the functionalities and communication drivers) for 30 minutes.

After this period the ESA Connect application must be closed and reopened.

The Crew runtime will run again for 30 minutes.

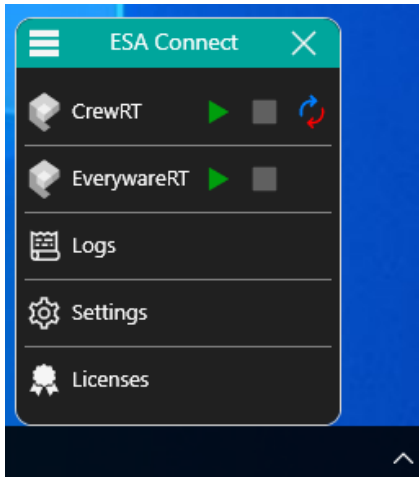
The customer during this period can check completely the application.



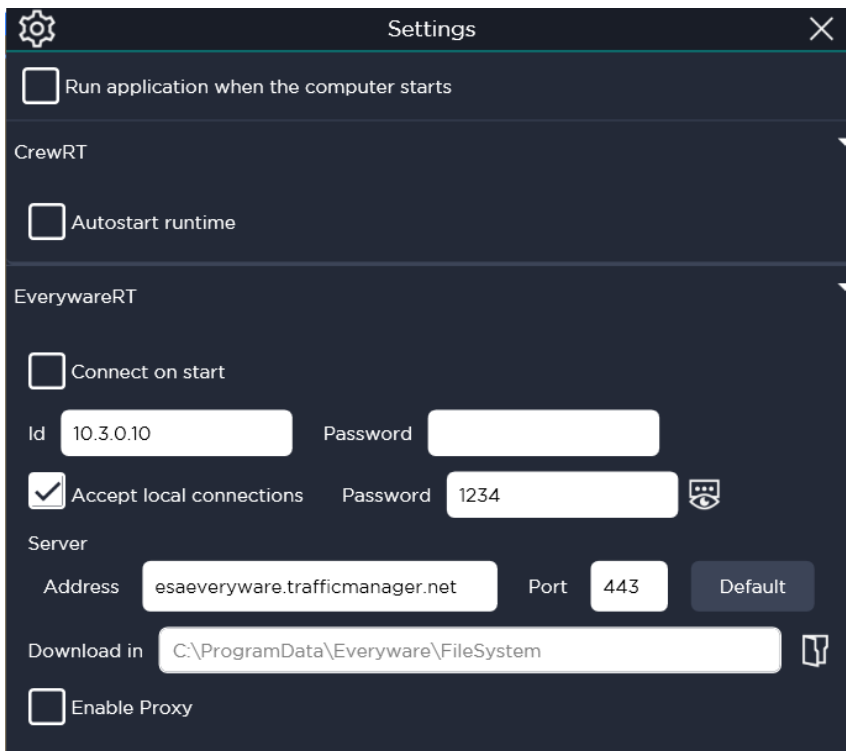
Application download

Once the application development has been completed with Crew editor the user can download it to the target via a simple LAN connection.

In the target the user has to open the ESA connect taskbar menu and select Settings.



The page below will be displayed:





The user has to open the Everyware RT section, enable the flag Accept local connection and insert a password.

In Crew afetr having selected the download icon the form beloww will be displayed:

A screenshot of a 'Downloader wizard' dialog box. The dialog has a teal header and a dark grey body. It contains the following elements: a 'Connection mode' dropdown menu set to 'LAN (Everyware mode)'; an 'IP address' field with four input boxes containing '192', '168', '10', and '99', and a 'Test Ping' button; a 'Password' field with four dots; and an 'Options' section with two radio buttons: 'Update only new files' (selected) and 'Choose files to be downloaded'. At the bottom, there are 'Cancel' and 'Next' buttons with a right-pointing arrow.

The user has to:

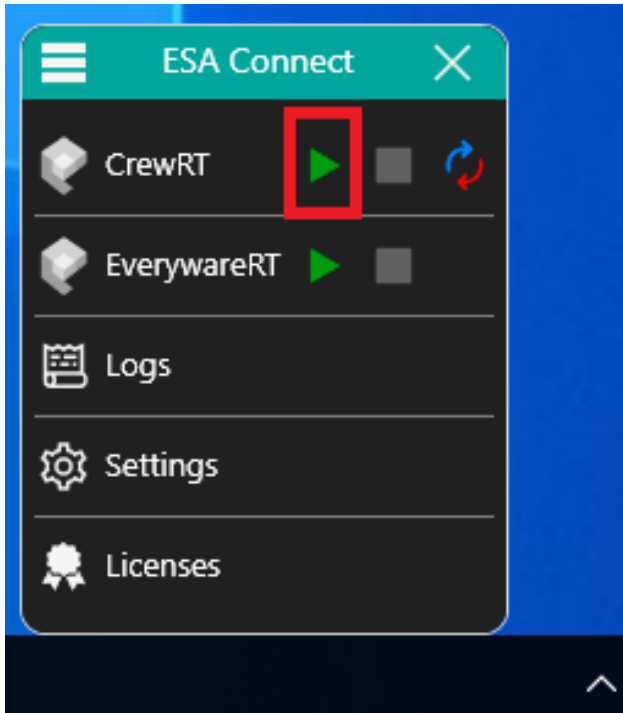
- Select LAN (Everyware mode)
- Insert the Ip address of the target PC
- Test the connection with the Test Ping button
- Insert the same password that is inside the target EAA Connect option
- Press Next

The application will be downloaded to the target and will start automatically.



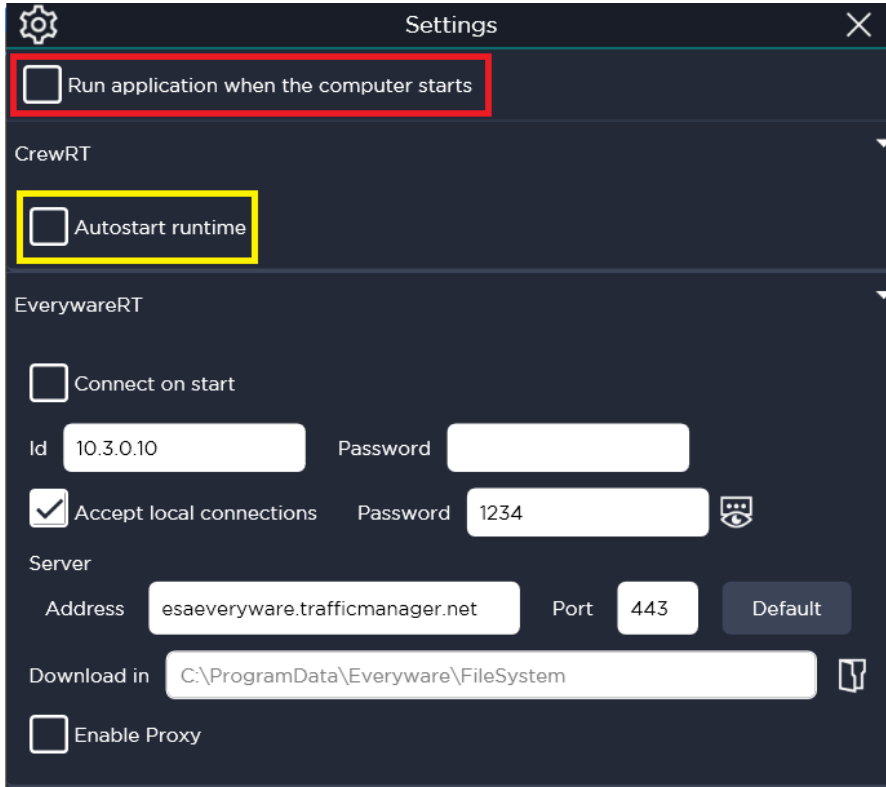
Application start up

In order to run the application manually the user has to open the ESA Connect menu and press the Green play icon displayed below.





Once the developing and test is complete the application can run automatically selecting the options below:



Run application when computer starts means that the ESA connect will start up automatically.

Autostart runtime means that the Crew runtime will start automatically and the project page will be displayed.



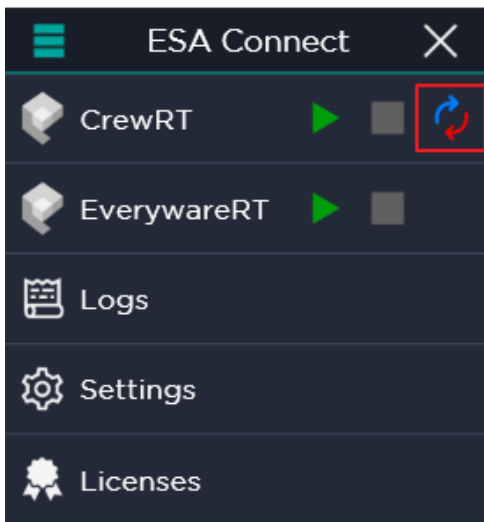
Application backup and restore

It is possible to do the backup and restore of the application (and eventually also of the historical data defined in the application) via a removable disk (for example a simple memory stick).

This functionality is very important cause the user can save a backup and create a sort of “image” that can be reused in order to program another IPC.

The Crew runtime license cannot be ported together with the backup; the second IPC do require another Crew runtime license to be installed.

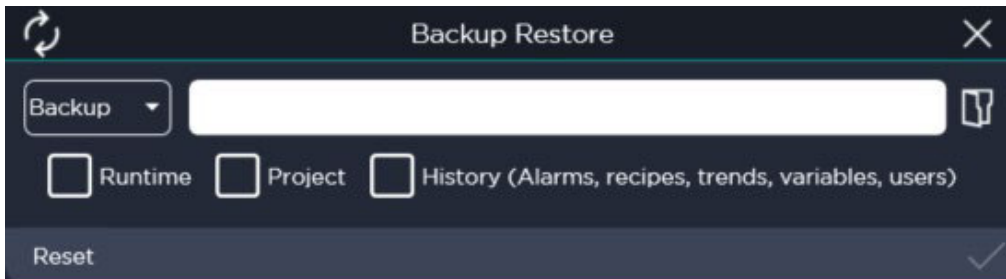
The first step is select the icon below:



The backup-restore dedicated form will be displayed.



Backup



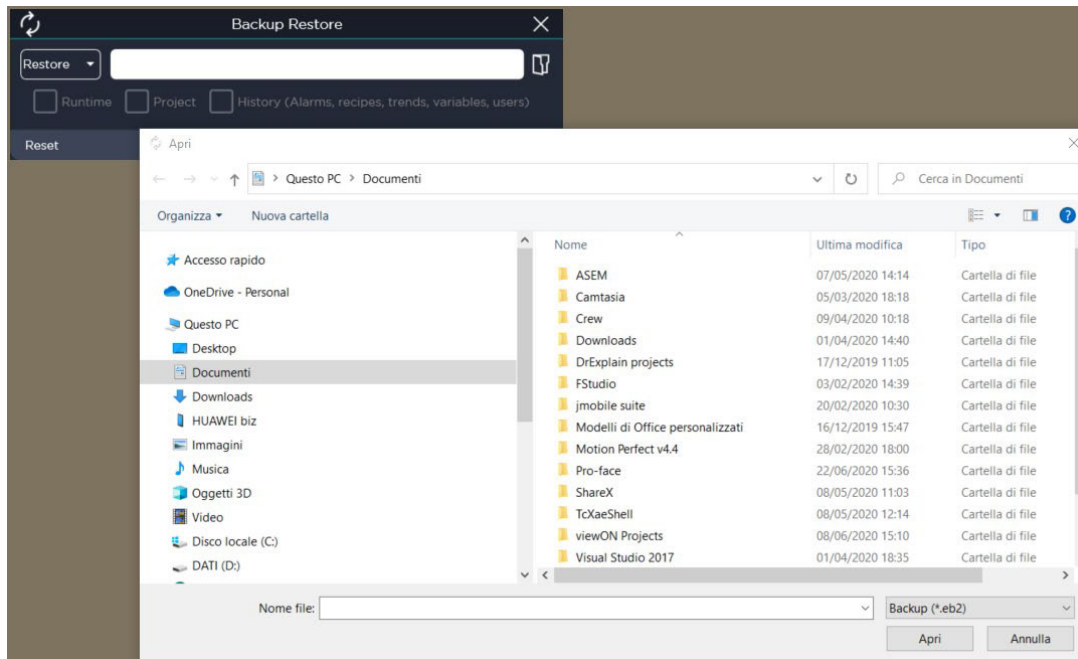
The user can select both the folder and file name that will be created and what has to be saved in the backup file.

- Runtime: ESA Connect application
- Project: customer application
- History: historical data

It is better to backup both the runtime and the project together in order to be sure that there will be not any problem due to the firmware release.



Restore



The user has only to select the backup file to be used in order to restore the unit.



Connect
ideas.
shape
solutions.

[ESA S.p.A. | www.esa-automation.com](http://www.esa-automation.com) |