



CREW FDA Batch report utility
CREWFDABR0

SOFTWARE

Connect
Ideas.
Shape
solutions.



Table of contents

<i>User manual description</i>	3
Supported Operating system.....	3
Prerequisite:.....	3
Total Installation Space Required:.....	3
<i>Application description</i>	4
Report Setting.....	4
Step 1.....	4
Step 2.....	5
Step 3.....	5
Step 4.....	12
Step 5.....	12
Current Batch Report.....	13
<i>Historical Batch Report</i>	14
<i>Trends</i>	15
Add Trend to Batch Report.....	17



User manual description

This manual has been developed to guide you through the Batch Reporting functionality with comprehensive, step-by-step method of instruction. This user manual is designed in a modular format for the purpose of grouping major topics, and placing emphasis on key product features.

Supported Operating system

1. Windows 10
2. Windows 8.1
3. Windows 8.0
4. Windows 7

Prerequisite:

1. Microsoft SQL Server 2012 Express Edition or above
2. .NET Framework 4 or above
3. Adobe Acrobat Reader DC

Total Installation Space Required:

5.2 GB



Application description

Report Setting

Open the application, the “Report Setting” Window will appear.

The screenshot shows a window titled "Report Setting" with five steps:

- Step 1: Select Logo an Enter Company name and Machine Name**
 - Logo: [Image placeholder]
 - Company Name: [Esa Automation]
 - Machine Name: [Machine1]
 - Buttons: Select Logo, Save
- Step 2: Select your Server Name and Database Name. Enter your SQL Server UserID and Password**
 - Server Name: [KALYANI\SQLEXPRESS1]
 - User ID: [sa]
 - Password: [*****]
 - Database Name: [CrewBatchReport]
 - Buttons: Test Connection, Connect to Database
- Step 3: Configure Datalog and other tables in scade and Run your Crew Project to create the tables in Database.**
- Step 4: Select appropriate tables from Database according to your Crew project.**
 - Datalog Table: [BatchData]
 - FDA Table: [FDATable]
 - Alarm Table: [Alarm Table]
 - Tag Table: [TAGS]
 - Button: Refresh
- Step 5: Assign batch parameters and triggers.**
 - Batch ID: [BatchID_V]
 - Product Name: [ProductName_V]
 - Start Trigger: [BatchStart Trigger]
 - Stop Trigger: [BatchStop Trigger]
 - Button: Refresh

Step 1

This close-up shows Step 1 of the window:

- Logo: [Image placeholder]
- Company Name: [Esa Automation]
- Machine Name: [Machine1]
- Buttons: Select Logo, Save

- To upload the Logo of your company, click on Select Logo.
- Select your logo from the File Dialog Box and click on Save
- Enter Company name in Company name field.
- Enter Machine name in Machine Name field.



Step 2

Step 2: Select your Server Name and Database Name. Enter your SQL Server UserID and Password

Server Name: User ID: Password:

Database Name:

- Click on '**Refresh**' symbol to fetch Server Names, Select Server Name from Dropdown Menu. Or add manually Server Name. (Keep "Sql Server Browser" (Sql Server Configuration Manager) enable to fetch server names.)
- Enter your SQL SERVER **User Id** and **password** in *User ID and password* field. (Enter user id and password which are used for Sql Server mixed mode authentication.)
- To authenticate the connection, Click **Test Connection**.
- Write your **Database Name** in *Database Name* field and Click on **Create and check Database** button. It will create database if not created earlier.

Step 3

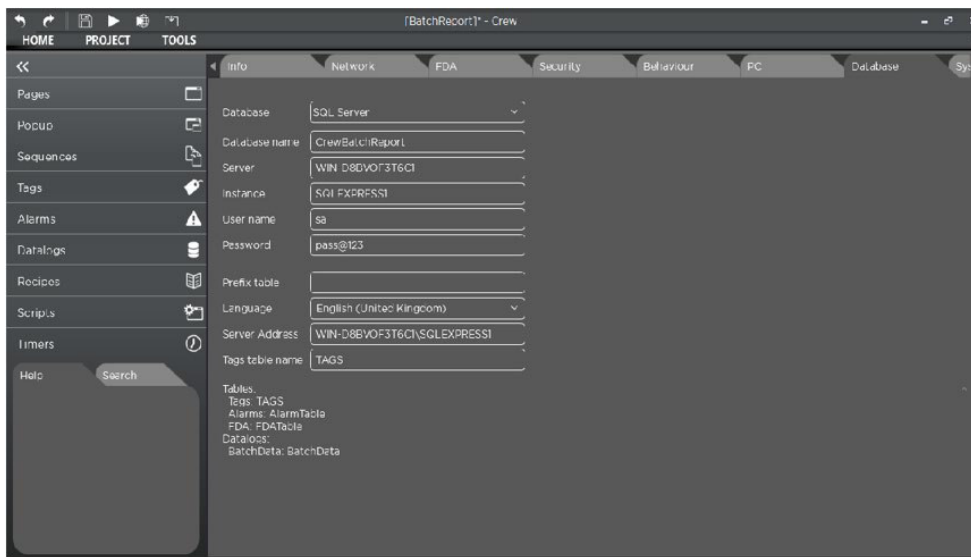
Configure Datalog and other tables in Crew scada and run the project in order to create the tables in the Database.

Crew Editor Settings



On the above report creating button, add event of run application as below: (Add ESABatchReport.exe to that event).

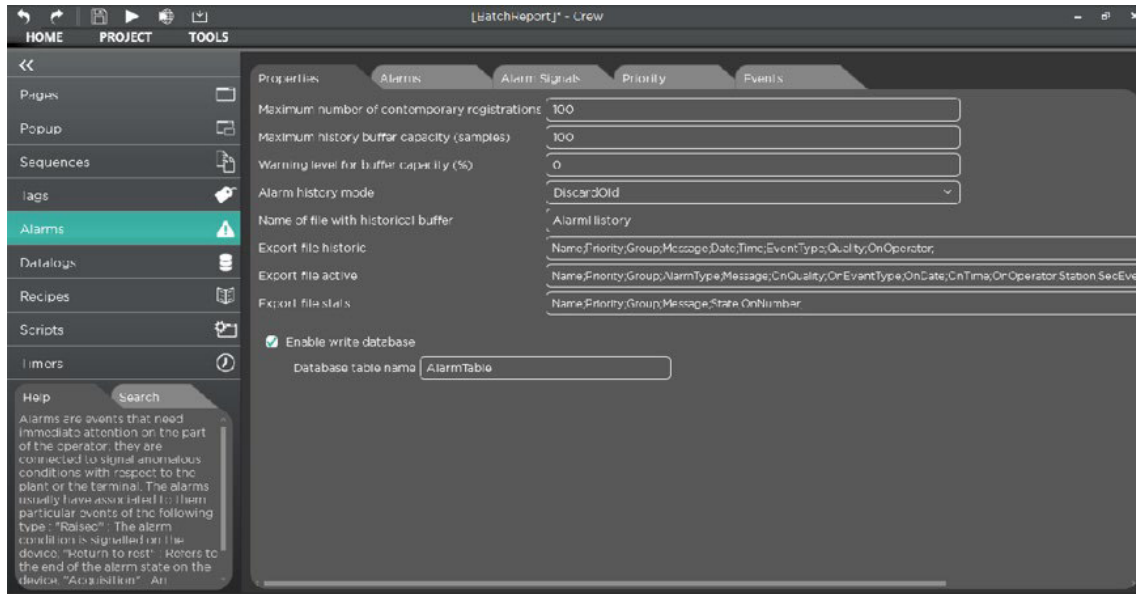
Database setting



- Select “**SQL Server**” from Database dropdown menu.
- Write **Database Name** in the *Database Name* field.
- Write **Server Name** in the *Server Name* field.
- Write **Instance Name** in the *Instance Name* field.
- Write **User Name** in the *User Name* field.
- Write **Password** in the *Password* field.
- Select Language from Dropdown Menu.
- Write **Server Address** in the *Server Address* field.
- Give Tag Table Name in *Tag table Name* field.



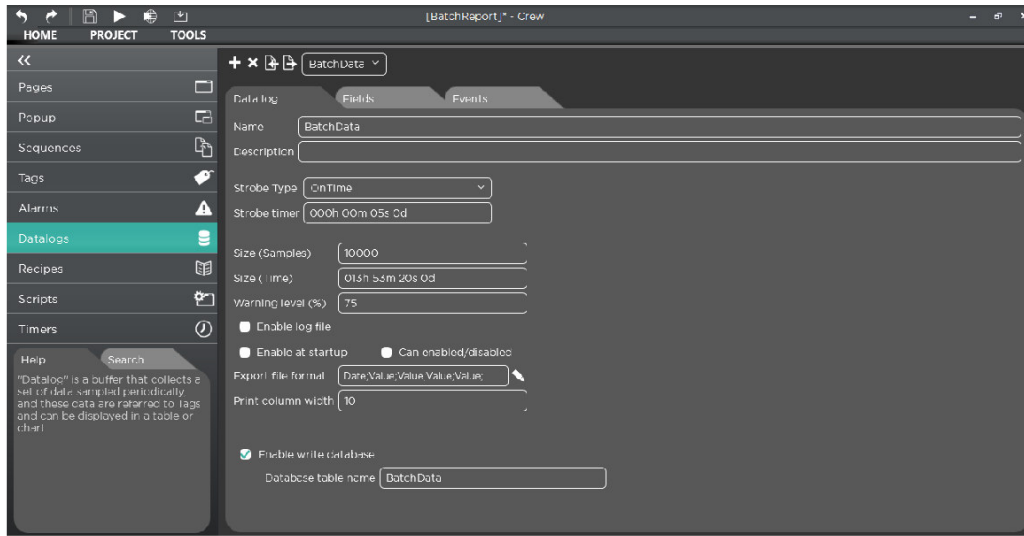
Alarm Setting



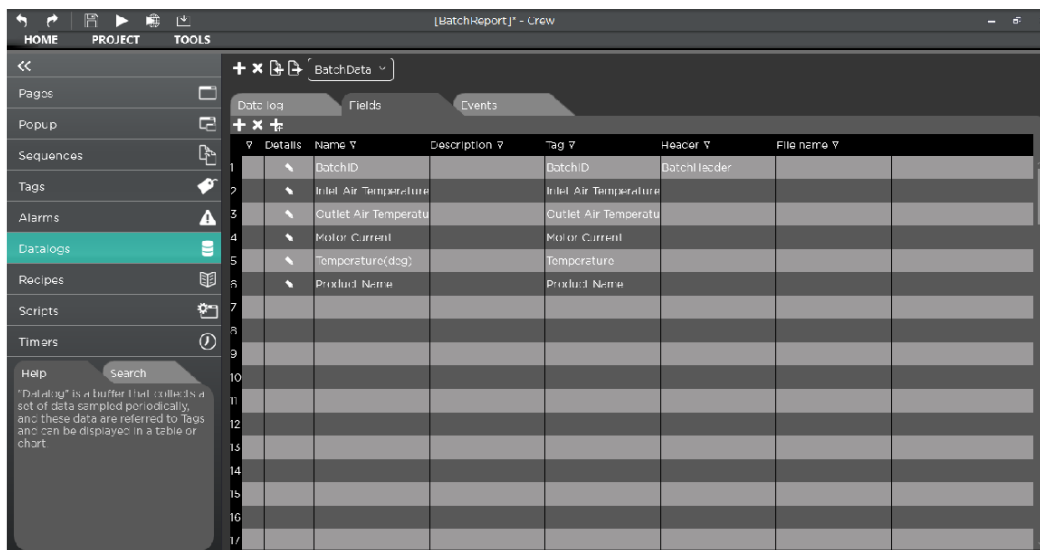
- Tick **Enable write database** checkbox to write the table in database.
- Write **Table Name** in the *Database table name* field.



Datalog Setting



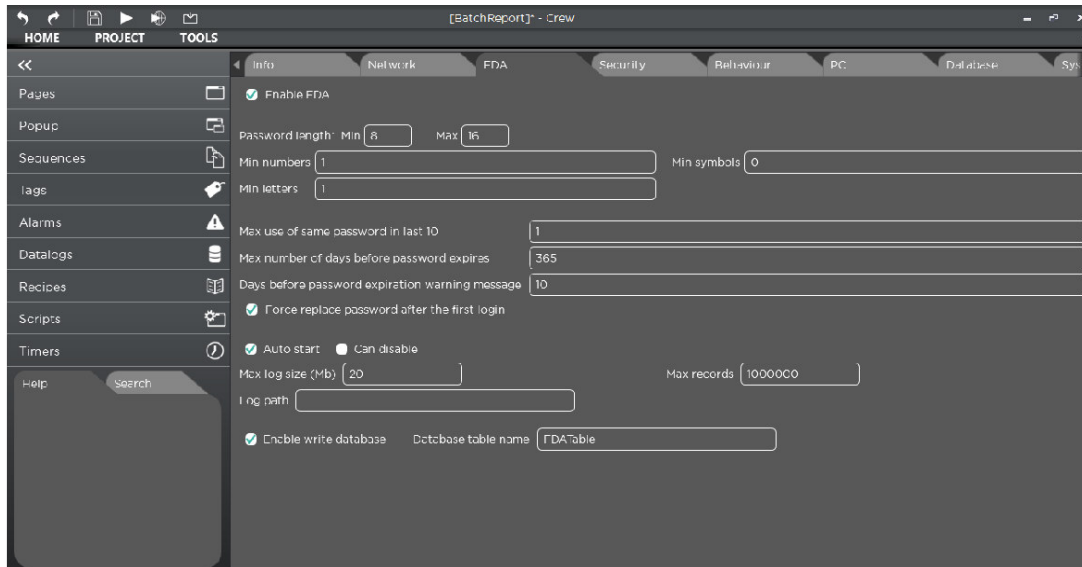
- Tick **Enable write database** checkbox to write the table in database.
- Write **Table Name** in the *Database table name* field.





- Add Fields to add the columns in **Datalog table** in database.
- Add **BatchID** and **ProductName** column in **Datalog table**.
- Give same name for **BatchID** and **ProductName** column as the name of **respective tag**.
- Assign **tags** to each field accordingly.

FDA Settings



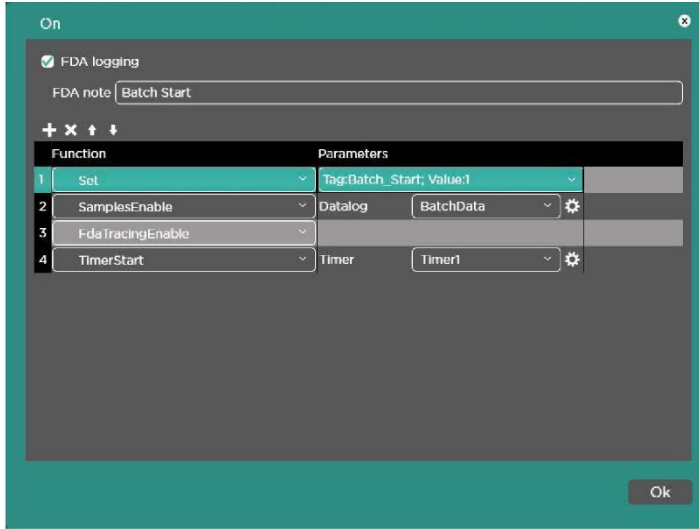
- Tick **Enable FDA** checkbox to fetch the FDA table in database.
- Tick **Enable write database** checkbox to write the table in database.
- Write **Table Name** in the *Database table name* field.

Tag Settings

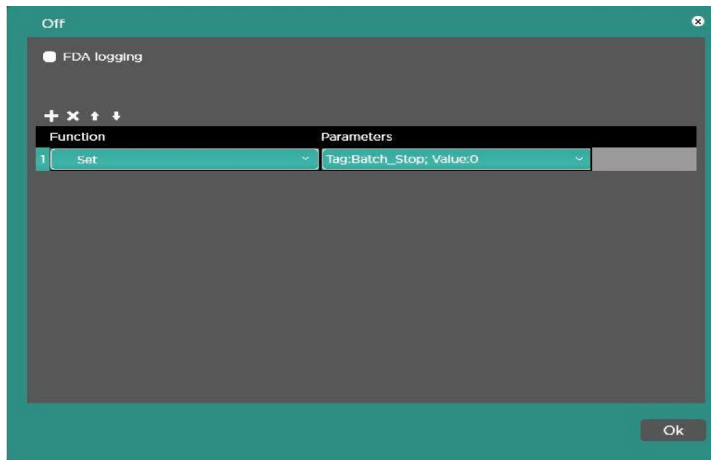
- Add Tags for Batch Start Trigger and Batch Stop Trigger in Tags Section in Crew Scada.



- Add functions on Start Trigger Button for ON option.

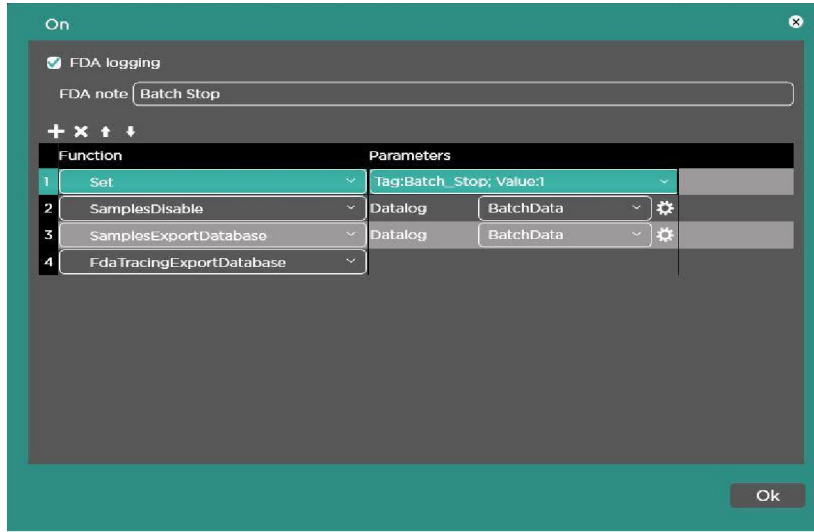


- Add functions on Start Trigger Button for 'OFF' option

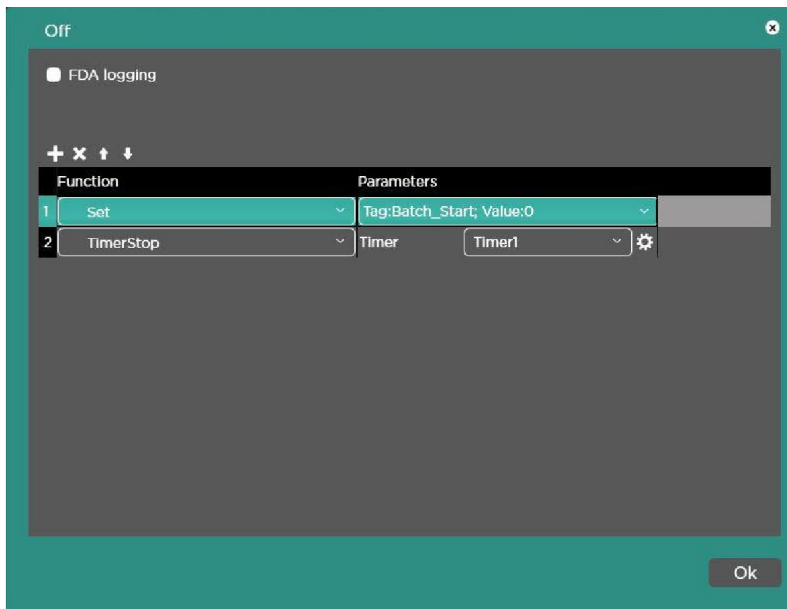




- Add functions on Stop Trigger Button for 'ON' option



- Add functions on Stop Trigger Button for 'OFF' option





Step 4

Step 4: Select appropriate tables from Database according to your Crew project.

Datalog Table:	FDA Table:	Alarm Table:	Tag Table:	
BatchData	FDATable	AlarmTable	TAGS	Refresh

- Select Table Name from Dropdown Menu.(Select Appropriate table names for each table as per Crew Scada)
- Click '**Refresh**' Button after selecting appropriate tables from database.

Step 5

Step 5: Assign batch parameters and triggers.

Batch ID:	Product Name:	Start Trigger:	Stop Trigger:	
BatchID_V	ProductName_V	BatchStartTrigger	BatchStopTrigger	Refresh

- Select Column Name from Dropdown Menu. (Select Appropriate Column names for each Column as per Crew Scada)
- To save the connection, Click Save.



Current Batch Report

Company Name: Esa Automation
Machine Name: Machine1
Time: 31-08-2018 14:31:27

Product Name: P909
Batch Started By: defaultuser
Batch Ended By: defaultuser

Batch Id: B909
Start Time: 2018-08-30 18:59:43
End Time: 2018-08-30 19:00:20

Batch Log Data

Date Time	Inlet Air Temp Set Value(deg)	Inlet Air Temp Actual Value(deg)	Outlet Air Temp Set Value(deg)	Outlet Air Temp Actual Value(deg)	Motor Current(amp)	Temperature(deg)
30-08-2018 18:59:41	20	0	25	0	0	0
30-08-2018 18:59:48	20	0	25	0	0	0
30-08-2018 18:59:53	20	0	25	0	0	0
30-08-2018 18:59:58	20	0	25	0	0	0
30-08-2018 19:00:03	20	0	25	0	0	0
30-08-2018 19:00:08	20	0	25	0	0	0
30-08-2018 19:00:13	20	0	25	0	0	0

Batch Alarms

AlarmName	Description	InTime	OutTime
-----------	-------------	--------	---------

After Report settings, Current Batch Report will be shown.



Historical Batch Report

Company Name: Esa Automation
Machine Name: Machine1
Time: 31-08-2018 14:33:11

Current Batch Report | Historical Batch Report | Trends

Batch Id: From: To:
Start Time: 2018-08-14 14:35:46 Product Name: P9 Batch Started By: defaultuser
End Time: 2018-08-14 14:36:41 Batch Ended By: defaultuser

Batch Log Data

Date Time	Inlet Air Temp Set Value(deg)	Inlet Air Temp Actual Value(deg)	Outlet Air Temp Set Value(deg)	Outlet Air Temp Actual value(deg)	Motor Current(amp)	Temperature(deg)
14-08-2018 14:35:51	20	32	25	83	94	75
14-08-2018 14:35:56	20	32	25	83	94	75
14-08-2018 14:36:01	20	32	25	83	94	75
14-08-2018 14:36:06	20	32	25	83	94	75
14-08-2018 14:36:11	20	32	25	83	94	75
14-08-2018 14:36:16	20	32	25	83	94	75
14-08-2018 14:36:21	20	32	25	83	94	75

Batch Alarm

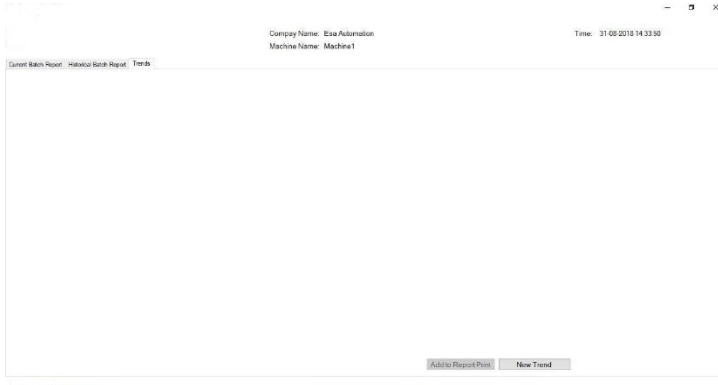
AlarmName	Description	InTime	OutTime
Inlet Air Temperature	Inlet Air Temperature is High	14-08-2018 14:35:48	14-08-2018 14:32:28
Outlet Air Temperature	Outlet Air Temperature is High	14-08-2018 14:36:01	14-08-2018 14:36:37

Page Setup: Generate Report
Report Printed By:

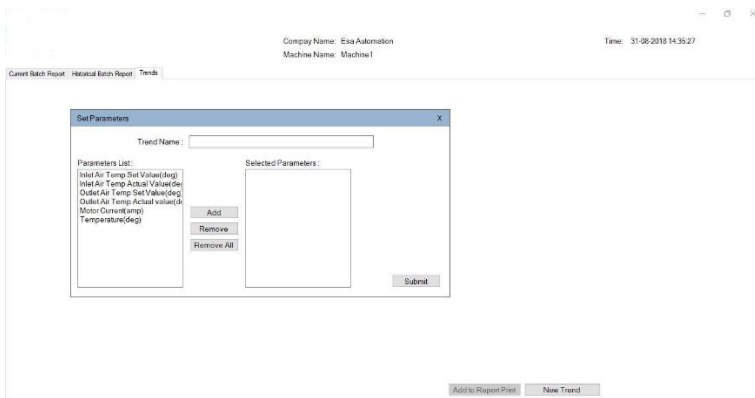
- After Report settings, select Batch ID from Dropdown Menu. Data will be shown according to Batch ID.
- Select Date from “from and to” box to view Reports between that date.
- Select *page setup* mode for Report from Dropdown Menu on the *Lower Left Corner* of the page.



Trends



- Select **Trends** on *Tab page*.
- To create a new trend, Click **New Trend**.
- On Clicking **New Trend**, **Set Parameter** pop up will appear.



Enter name of the trend in the **TrendName** field.

- To add parameters in the list, Select parameter from **Parameters List** and click **ADD**.
- To remove parameter from the list, Select parameter from **Selected Parameters** and Click **Remove**.
- To remove all the parameters from the list, Click **Remove All**
- To add Selected Parameters in the trend, Click **Submit**.



Company Name: Esa Automation
Machine Name: Machine1
Time: 31-08-2018 14:36:12

Current Batch Report | Historical Batch Report | Trends

Trend Name: Trend

Parameters List:

- Inlet Air Temp Set Value(deg)
- Inlet Air Temp Actual Value(deg)
- Outlet Air Temp Set Value(deg)
- Outlet Air Temp Actual Value(deg)
- Motor Current(amp)
- Temperature(deg)

Selected Parameters:

- Inlet Air Temp Set Value(deg)
- Inlet Air Temp Actual Value(deg)

Buttons: Add, Remove, Remove All, Submit

Buttons: Add to Report Print, New Trend



Add Trend to Batch Report



- To add trend in Batch Report, Click **Add to Report Print**.
- To generate the Batch Report, select **Batch Report** Tab and Click on **Generate Report** button.



Connect
ideas.
shape
solutions.

[ESA S.p.A. | www.esa-automation.com](http://www.esa-automation.com) |